



NEWINGTON  
LONDON

2 Bedrooms

Apartment

Located in London

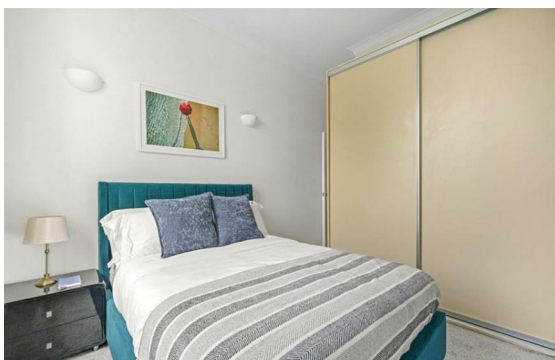
£1,235 Per Month



info@newingtonstates.com

<http://www.newingtonstates.com>

020 7724 2233



A stylish two-bedroom, two-bathroom apartment, situated on the second floor (with lift access) of a well-managed portered building in Marylebone. The apartment offers a contemporary finish throughout and benefits from air conditioning, 24-hour security, and concierge services. The accommodation comprises two bedrooms, two bathrooms, a modern kitchen, and a bright reception room.

Located on Hallam Street in the heart of Fitzrovia, the property is surrounded by independent boutiques, cafés, and restaurants, making the area highly sought after by both residents and visitors alike.

EPC rating: C

## Energy Efficiency Rating: C

Agents Note: Whilst every care has been taken to prepare these particulars, they are for guidance purposes only. All measurements are approximate and are for general guidance purposes only and whilst every care has been taken to ensure their accuracy, they should not be relied upon and potential buyers/tenants are advised to recheck the measurements.

# NEWINGTON LONDON

60 Upper Montagu Street

London

W1H 1SN

020 7724 2233

[info@newingtonstates.com](mailto:info@newingtonstates.com)

<http://www.newingtonstates.com>